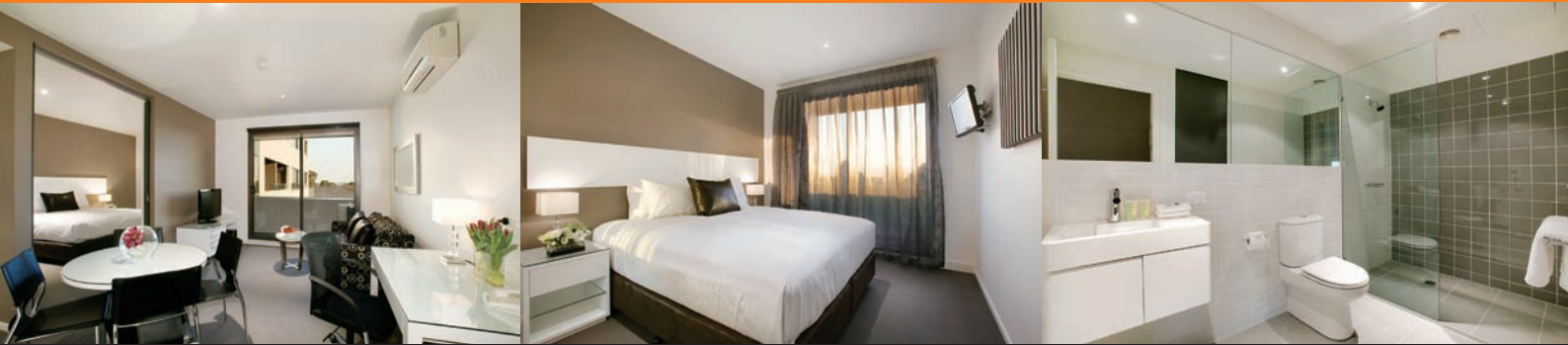




Punthill Oakleigh



Punthill Oakleigh is located 12km from Melbourne CBD and only minutes away from Chadstone Shopping Centre - the biggest and most glamorous shopping centre boasting over 530 stores.

This slick and stylish apartment hotel features modern and contemporary furniture, fully equipped kitchen and LCD flat screen TV's.

For business travellers whom require accommodation close to Notting Hill, Mt Waverley and Clayton, Punthill Oakleigh makes the perfect choice. The central business district of Oakleigh is within close proximity.

APARTMENT FEATURES

- Fully equipped kitchens (apartments only)
- Separate living area (apartments only)
- LCD TV
- DVD Player
- Foxtel
- Radio / alarm clock
- Reverse cycle heating / cooling
- High speed internet access
- Direct dial phone
- Iron & Ironing board
- Laundry facilities (apartments only)
- Work station
- Balcony

PROPERTY FEATURES

- Restaurant
- Gymnasium
- Spa
- Onsite parking
- Serviced daily (excluding long stays)
- Guest Laundry



punthill
apartment hotels

T 1300 731 299 E info@punthill.com.au
Book Online: www.punthill.com.au
1384 Dandenong Road, Hughesdale VIC 3166